

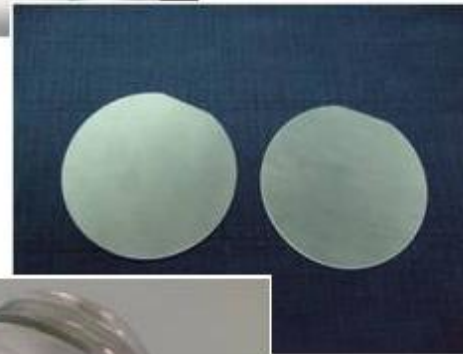
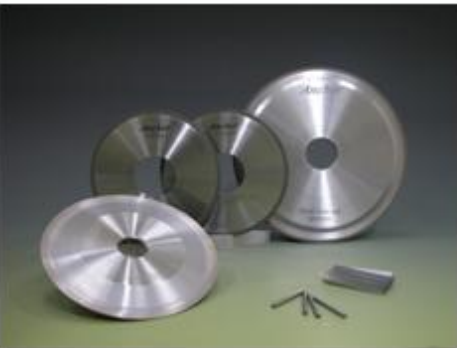
Anchor[®]

Since 1946

Partner for ultimate success

SAPPHIRE DIAMOND

GRINDING WHEELS



**SAPPHIRE
DIAMOND**
Grinding Wheels

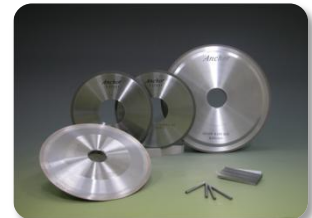
Reach the requirements of excellent cutting ability, surface finishing and perfect profile persistence. Provide the best solution for sapphire grinding.

WHEELS FOR SAPPHIRE PRODUCTION PROCESS

Resin bond cutting wheel

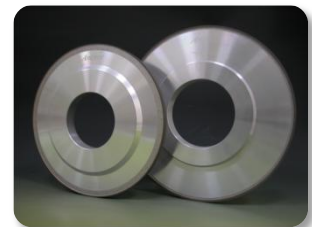
| Specification | Size (unit : mm) |
|---------------------------|----------------------|
| SDC 120 P 100 BCW 1A1R5.5 | 300×1.5×25.4×1.2×5.5 |
| SDC 120 N 75 BCW 1A1R8 | 400×2.3×25.4×1.8×8 |

- Excellent cutting ability and low grinding load.



Surface and cylindrical grinding wheels

| Specification | Size (unit : mm) |
|-------------------------|-------------------------|
| SDC 120 N 100 BSW 1A15 | 200×15×31.75×5 |
| SDC 300 N 100 BSW 14A13 | 350×32×127×250×260×15×3 |
| SD 150 N 150 VW 22A2X5 | 66×57×23TP×8×5 |
| SD 800 N 150 VW 22A2X5 | 66×57×23TP×8×5 |



Resin bond centerless grinding wheel

| Specification | Size (unit : mm) |
|----------------------------|-------------------------|
| SDC 140N/230N 100 BCG 9A15 | 450×205×228.6×155×300×5 |
| SDC 230N 100 BCG 9A15 | 450×305×228.6×255×305×5 |

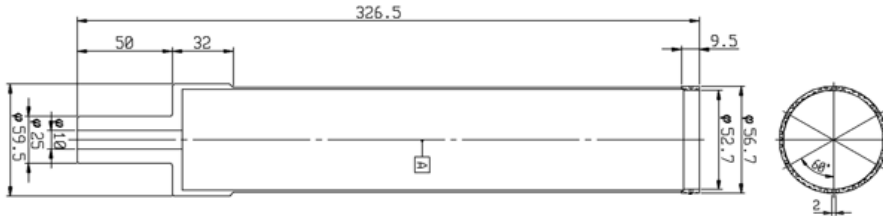
- The multi-layered design could reach the requirements of the processing efficiency and surface roughness.



■ Metal bond drill pipe

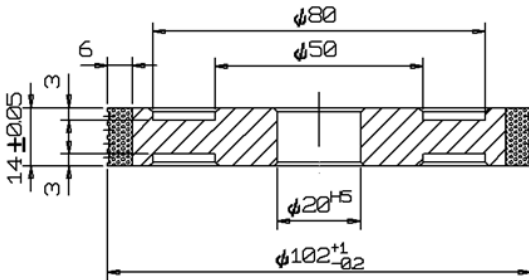
| Specification | Size |
|----------------------|-----------------------|
| SD 80 N 75 MW 2DR8.5 | For 2", 4", 6" and 8" |

- Size customization



■ Metal bond beveling wheel

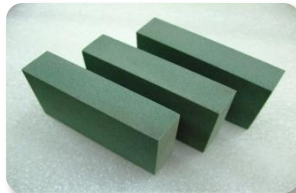
| Specification | | |
|---------------|-------------|-------------|
| SD400N100MFW | SD600N75MFW | SD500N75MFW |



■ Vitrified bond dressing tools

| Specification |
|---------------|
| GC / WA |

- Green silicon carbide
- White aluminum oxide



- For any further inquiry, please contact us via the company information below.

COMPANY INFORMATION

CARBO TZUJAN INDUSTRIAL CO., LTD.

- For details, please contact the following agency.

Anchor[®]

INFORMATION:

- TEL : +886-2-2679-3461
- FAX : +886-2-2679-4561
- Head Office: 239 No.1 Fu An St. Ying Ko District, New Taipei City, Taiwan.

CONTACT US:

- Online service : www.carbo.com.tw
- E-mail : webmaster@carbo.com.tw

- While using grinding wheels, it is essential that you observe correct procedures and work safely to protect yourself.