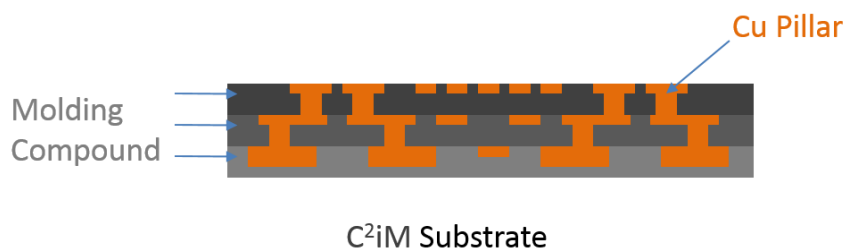


■ Application of HSP wheel

IC board could be divided into ABF BT and C²iM by the materials and process. C²iM is based on epoxy resin as the main sealing film material, and with the copper wires which are electroplated to build on each molding layer (the figure shown as below). Therefore, the grinding wheel will simultaneously grind both epoxy resin and copper wires in the grinding process. Anchor provides two solutions which include GC vitrified finishing wheel and HSP wheel, according to the copper content of work piece and roughness requirement.



PCB Surface polishing



SPECIFICATION

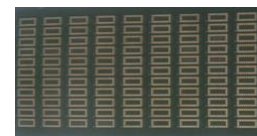
■ GC vitrified finishing wheel



| | |
|---------------|--|
| Specification | GC600 (finish grinding), GC320 (rough grinding) |
| Size | Customize |
| Application | IC board with lower copper content (< 30%) |
| Roughness | C ² iM resin sealing film Ra0.56, Cu Ra0.2 |
| Feature | Good cutting ability and life time, but frequent dressing during grinding. |

Grinding case :

| | | | |
|---------------|-------------|-----------------|-------|
| Specification | GC600 V | Infeed (coarse) | 10 um |
| Size (mm) | 350X75X127 | Infeed (medium) | 5 um |
| Machine | Joen Lih | Infeed (fine) | 3 um |
| Wheel speed | 30 – 32 m/s | | |



Work result

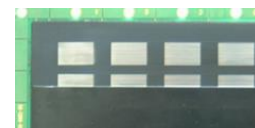
■ HSP wheel



| | |
|---------------|---|
| Specification | GC600 (finish grinding), GC320 (rough grinding) |
| Size | Customize |
| Application | IC board with higher copper content (> 30%) |
| Roughness | C ² iM resin sealing film Ra0.2, Cu Ra0.2 |
| Feature | Better roughness, lower loading, improved yield, but shorter life time. |

Grinding case :

| | | | |
|---------------|--------------|-----------------|-------|
| Specification | GC320 HSP | Infeed (coarse) | 20 um |
| Size (mm) | 180X13X31.75 | Infeed (fine) | 10 um |
| Wheel speed | 33 m/s | Traverse speed | 3 mm |



Work result

■ For further inquiry, please contact us via the company information below.

COMPANY INFORMATION

CARBO TZUJAN INDUSTRIAL CO., LTD.

- For details, please contact the following agency.

Anchor

INFORMATION:

- TEL : +886-2-2679-3461
- FAX : +886-2-2679-4561
- Head Office: 239 No.1 Fu An St. Ying Ko District, New Taipei City, Taiwan.

CONTACT US:

- Online service : www.carbo.com.tw
- E-mail : webmaster@carbo.com.tw

- While using grinding wheels, it is essential that you observe correct procedures to protect yourself.