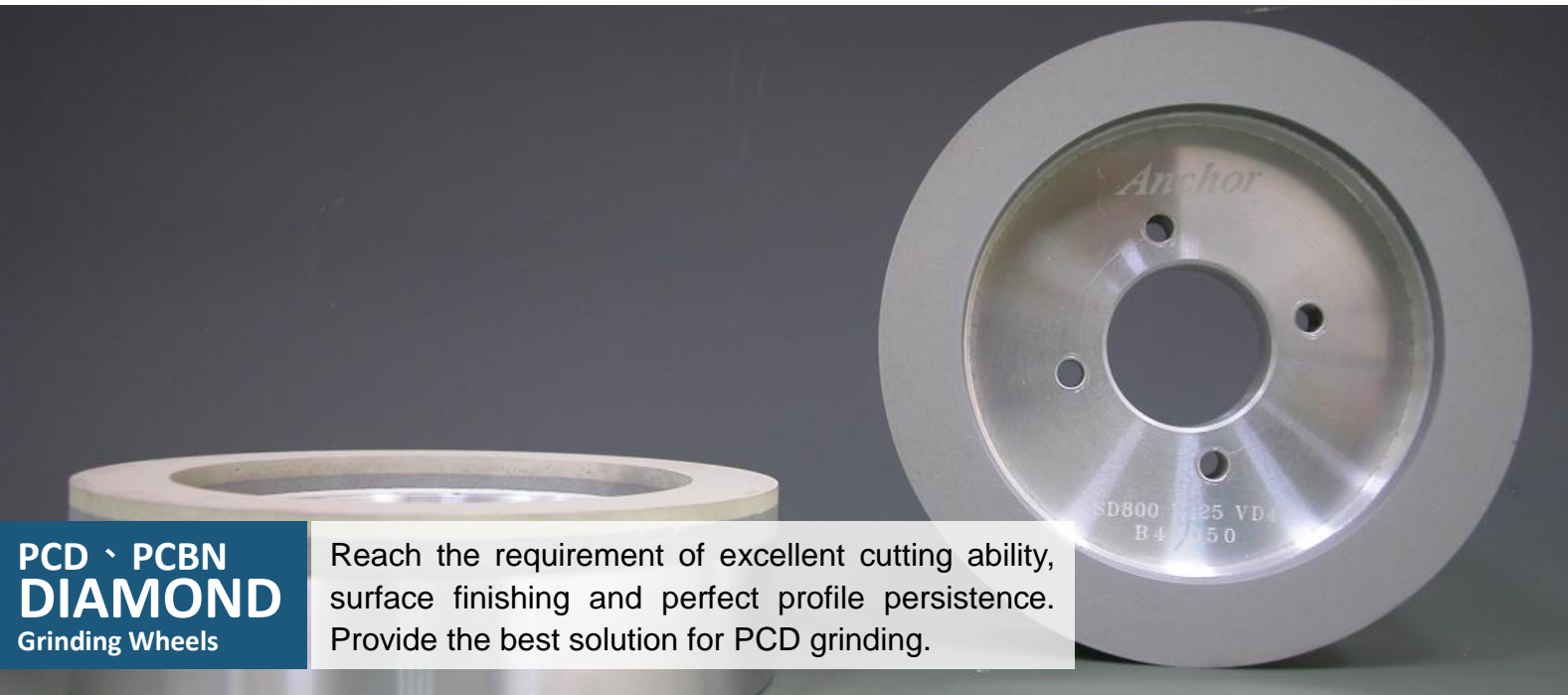


Anchor[®]

Since 1946

Partner for ultimate success

PCD 、 PCBN DIAMOND VITRIFIED GRINDING WHEELS



PCD 、 PCBN
DIAMOND
Grinding Wheels

Reach the requirement of excellent cutting ability, surface finishing and perfect profile persistence. Provide the best solution for PCD grinding.

■ TYPES OF MATERIAL

■ PCD (Polycrystalline diamond) and CVDD (Chemical Vapor Deposition Diamond)

Polycrystalline Diamonds can be classified into two types, PCD and CVDD. PCD is produced by sintering together selected diamond particles at high pressure and temperature and able to be formed in various shape and size. CVDD has better thermal conductivity and chemical stability, and provides better surface finish than PCD.



■ PCBN (Polycrystalline Cubic Boron Nitride)

The hardness of CBN is only second to diamond, CBN has excellent chemical stability even in high temperature (over 1000°C) and can be formed in various profile and size.



■ Single Crystal Diamond

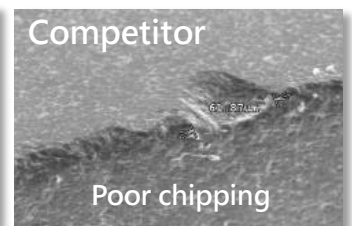
Single Crystal Diamonds are generally classified into two types, Natural Diamond and Synthetic Diamond. Natural Diamonds looks colorless and transparent, have better abrasion resistance and is the hardest materials for cutting tools. Synthetic Diamond is formed in high pressure and looks translucent yellow. Its' hardness is a bit lower than Natural Diamond. In general, Natural diamond has better toughness and provides better surface roughness.



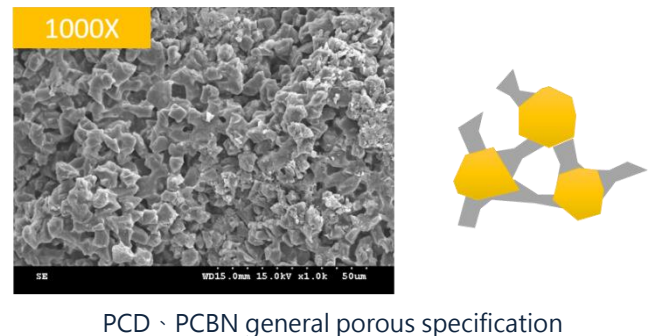
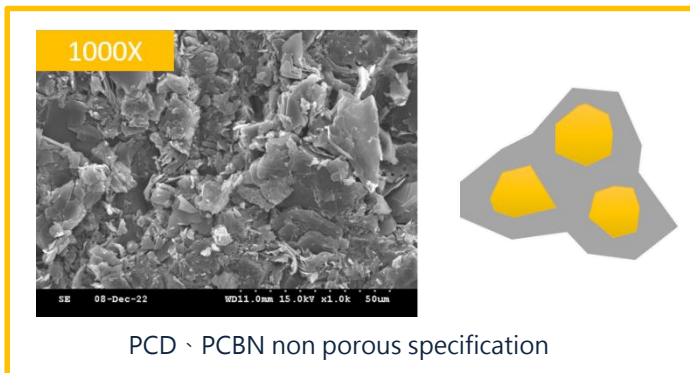
SPECIFICATION

■ EXPERIMENTAL DATA

Anchor's grinding wheel for PCD and PCBN has better life time. The figures show that Anchor wheel offers minimal chipping and better quality than competitor's which results in very poor chipping on the work piece.



■ New non porous design



↑ Super long life time, great cutting and chipping performance.

■ STANDARD SPECIFICATION

Abrasive	Grit size	Hardness	Concentration	Bond	Shape	X thickness
SD	Rough #400 #500 #600	N	150	VPCD	6A2	5
	Fine #1000 #1200 #1500					6
	Super fine #2000 #3000 up					10 (unit : mm)

■ For any further inquiry, please contact us via the company information below.

COMPANY INFORMATION

CARBO TZUJAN INDUSTRIAL CO., LTD.

- For details, please contact the following agency.



INFORMATION:

- TEL : +886-2-2679-3461
- FAX : +886-2-2679-4561
- Head Office: 239 No.1 Fu An St. Ying Ko District, New Taipei City, Taiwan.

CONTACT US:

- Online service : www.carbo.com.tw
- E-mail : webmaster@carbo.com.tw

- While using grinding wheels, it is essential that you observe correct procedures and work safely to protect yourself.